



ASPEN 11.6.6

Release Notes

Table of Contents

ASPEN 11.6.6 Overview	2
Changes: Across ASPEN	3
Special Surveyors.....	3
States can select special surveyors – ACO, ACTS	3
URL/Address References	4
All references use .gov domain - ACO, ACTS, ASE-Q, ASSURE, ePOC.....	4
Changes and New Features: ACO.....	5
Certification	5
Hospital-Based ESRD Providers	5
Facility Properties	5
New set of state CCN codes for Hospices	5
Services	6
Update facility services	6
Changes and New Features: ACTS	7
Alleged Perpetrators	7
Merge alleged perpetrators works correctly	7
CoPs	8
CoPs displayed for OPTs and CORFs	8
Upload	8
Finalization and upload permitted when Transplant Program Type terminated	8

ASPEN 11.6.6 Overview

ASPEN 11.6.6 is scheduled for deployment to states and CMS Regional/Central Offices starting Sunday, April 7, 2019. This ASPEN maintenance release includes enhancements to existing functionality in the following applications:

- ACO/ARO
- ACTS/ACTS RO
- AEM
- ASE-Q
- ePOC
- ASSURE

Updates are described in the *Changes* section for Across ASPEN or individual applications, as applicable. Requirements marked as ACO and ACTS affect ACO/ARO and ACTS/ACTS RO unless otherwise indicated.

These release notes provide a summary of new and updated features in ASPEN 11.6.6. For detailed information about ASPEN applications, please refer to the applicable procedures guides.

The *ASPEN Database Additions and Modifications* section is not included in these release notes as there are no new tables, grants, or objects.

Changes: Across ASPEN

Special Surveyors

States can select special surveyors – ACO, ACTS

ACO and ACTS users can assign special staff to survey teams as long as the selected special surveyors are assigned proper survey rights through the State Working Access system. Special surveyors include:

- RO staff who participate in SA surveys
- CO staff who participate in SA surveys
- CMS contract surveyors
- Surveyors shared from another state

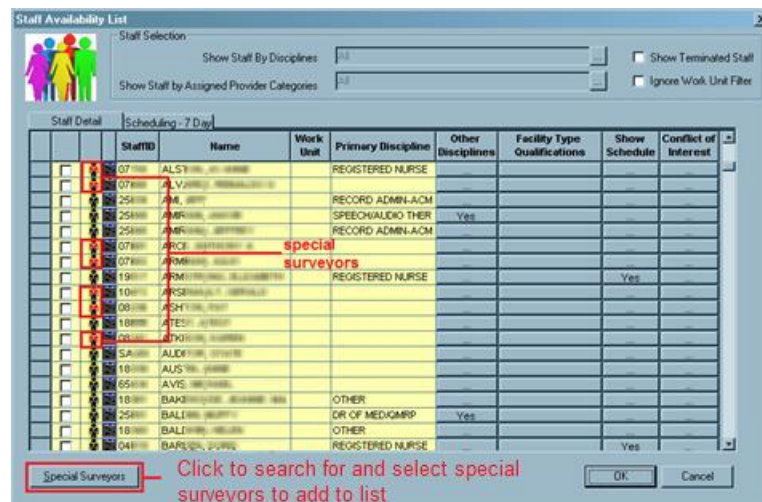


Figure 1: Special surveyors in surveyor list

URL/Address References

All references use .gov domain - ACO, ACTS, ASE-Q, ASSURE, ePOC

ASPEN URL and email address references now utilize the appropriate .gov rather than .com domain in the following links and email addresses.

- Click for ASPEN Web Support link in ACO, ACTS, and ASE-Q splash screens



Figure 2: ASPEN Web Support link on ACO splash screen

- Procedures Guides and Online Learning buttons in ACO and ACTS to open documentation

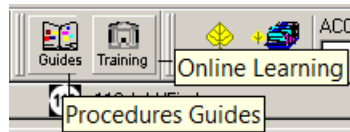


Figure 3: Procedures Guides and Online Learning buttons in ACO

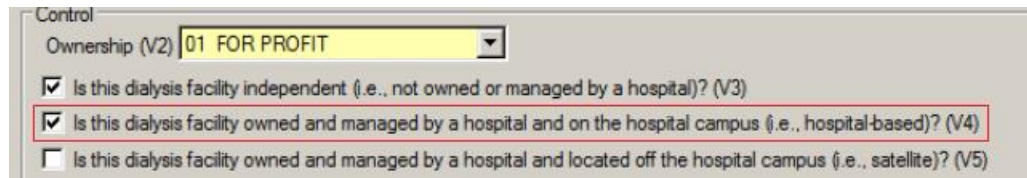
- Periodic emails: From address. The following periodic emails are sent nightly or weekly:
 - Late Certkit Upload
 - Past Due Cert Report
 - Past Due Invest Report
 - Intake Not Finalized
- ePOC emails: From address
- ASPEN action item emails: From address
- ASSURE emails: From address

Changes and New Features: ACO

Certification

Hospital-Based ESRD Providers

ASPEN now allows you to select the Hospital-based indicator (V4) on the CMS-3427 and successfully upload ESRD facilities with a CCN whose last four digits are in the 3700-3799 range.



The screenshot shows a section of the CMS-3427 form. At the top, there is a 'Control' label. Below it is a dropdown menu for 'Ownership (V2)' with '01 FOR PROFIT' selected. Below the dropdown are three checkboxes with their corresponding questions:

- Is this dialysis facility independent (i.e., not owned or managed by a hospital)? (V3)
- Is this dialysis facility owned and managed by a hospital and on the hospital campus (i.e., hospital-based)? (V4)
- Is this dialysis facility owned and managed by a hospital and located off the hospital campus (i.e., satellite)? (V5)

Figure 4: V4 selected on CMS-3427

Facility Properties

New set of state CCN codes for Hospices

Several states need additional state codes (the first two digits of the CCN) for Hospices because they are close to running out of CCNs to assign to Hospice providers. The new state prefix codes for Hospice CCNs are as follows:

- California - A0 and A1
- Florida - A2
- Louisiana - A3
- Michigan - A4
- Mississippi - A5
- Ohio - A6
- Pennsylvania - A7
- Tennessee - A8
- Texas - A9

Services

Update facility services

When more than one service is listed for a facility on the Alpha or Type tab in tree view, ASPEN no longer prevents you from updating and removing those services as needed.

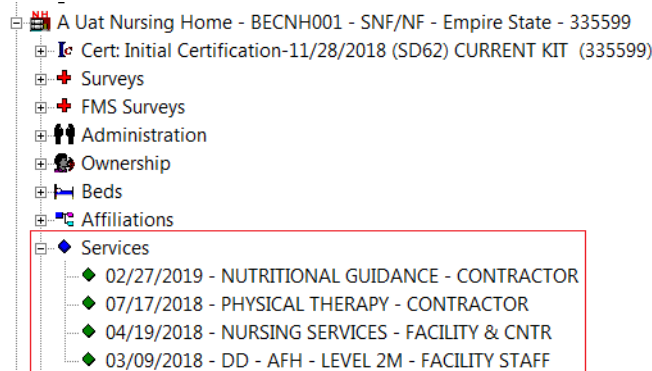


Figure 5: Services branch in a facility tree

To update a service:

1. Right-click it in the tree and select **Modify Service**:

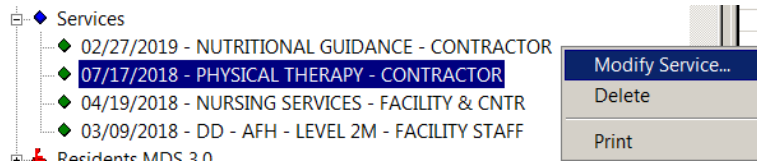


Figure 6: Modify Service option selected for a service

2. Make your changes in the Service dialog:

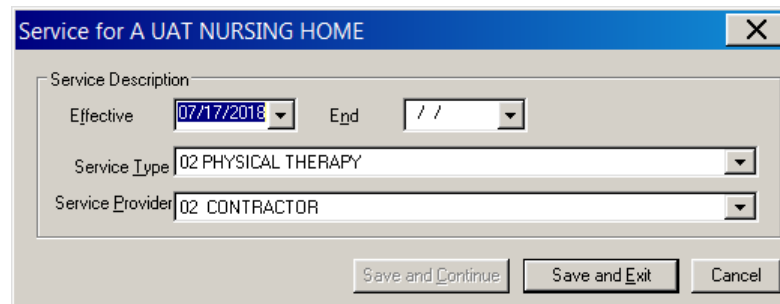


Figure 7: Service dialog for the selected service

To remove a service:

1. Right-click it in the tree and select **Delete**:

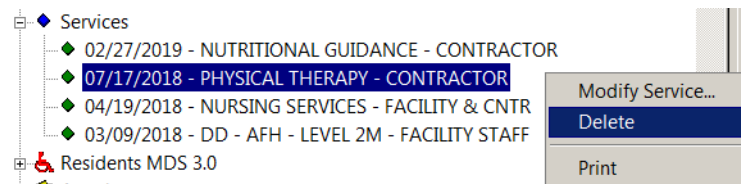


Figure 8: Delete option selected for a service

2. Click **Yes** in the confirmation prompt.

Changes and New Features: ACTS

Alleged Perpetrators

Merge alleged perpetrators works correctly

Previously, ACTS would stop responding without saving changes when you attempted to merge alleged perpetrators. The Merge Alleged Perpetrators function will now complete successfully. It is accessed by right-clicking an incorrect name variant in the Alleged Perpetrators node in Tree view to open the Find Alleged Perpetrators for Merge dialog.

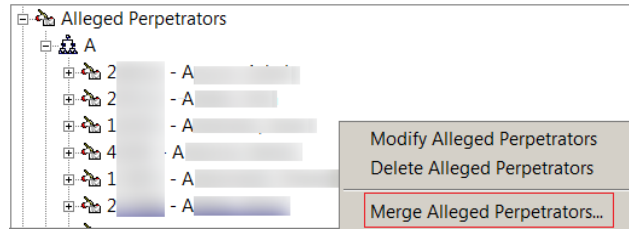


Figure 9: Merge Alleged Perpetrators option

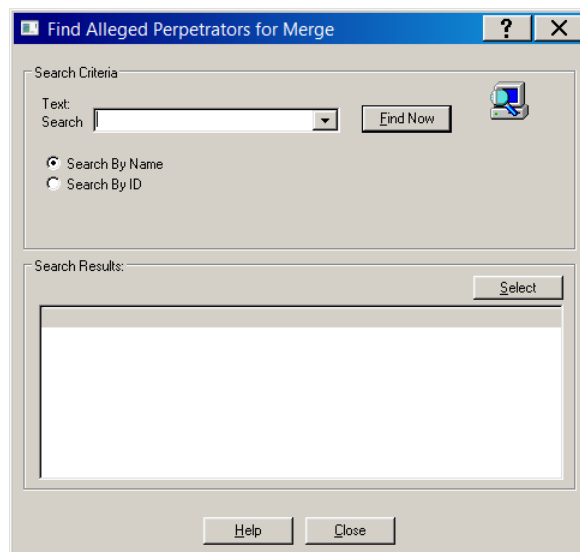


Figure 10: Find Alleged Perpetrators for Merge dialog

Note: The Alleged Perpetrators node, and therefore the Merge Alleged Perpetrators function, is not available in ACTS RO.

CoPs

CoPs displayed for OPTs and CORFs

When you create an intake for an OPT/SP (factype 081) or CORF (factype 141) facility, the Conditions of Participation grid on the Deemed tab is correctly populated with the CoPs from the relevant OPT/SP or CORF regulation set for the intake.

		Condition(s)
<input type="checkbox"/>	<input type="checkbox"/>	485.727 Establishment of the Emergency Program (EP)
<input type="checkbox"/>	<input type="checkbox"/>	485.707 COMPLIANCE W/ FED, STATE, & LOCAL LAWS
<input type="checkbox"/>	<input type="checkbox"/>	485.709 ADMINISTRATIVE MANAGEMENT
<input type="checkbox"/>	<input type="checkbox"/>	485.711 PLAN OF CARE & PHYSICIAN INVOLVEMENT
<input type="checkbox"/>	<input type="checkbox"/>	485.713 PHYSICAL THERAPY SERVICES
<input type="checkbox"/>	<input type="checkbox"/>	485.717 REHABILITATION PROGRAM
<input type="checkbox"/>	<input type="checkbox"/>	485.719 SERVICES PROVIDED UNDER ARRANGEMENTS
<input type="checkbox"/>	<input type="checkbox"/>	485.719(a) CONDITIONS
<input type="checkbox"/>	<input type="checkbox"/>	485.721 CLINICAL RECORDS
<input type="checkbox"/>	<input type="checkbox"/>	485.723 PHYSICAL ENVIRONMENT
<input type="checkbox"/>	<input type="checkbox"/>	485.715 SPEECH PATHOLOGY SERVICES
<input type="checkbox"/>	<input type="checkbox"/>	485.725 INFECTION CONTROL
<input type="checkbox"/>	<input type="checkbox"/>	485.729 PROGRAM EVALUATION

Figure 11: CoPs from relevant OPT/SP reg set in Conditions of Participation grid

Upload

Finalization and upload permitted when Transplant Program Type terminated

Edits have been adjusted to permit intake finalization and survey uploads (CSP-SRV) of Transplant Hospital (TH) investigations when a Transplant Program Type (TPT) for one or more allegations has been terminated on the certification. The edit check that formerly prevented finalization and uploads in this situation now evaluates not just the currently active TPTs for the TH, but also TPTs that were active at the time of the survey.

You can now finalize a TH intake and upload the investigation survey if an allegation is linked to a terminated TPT that was active for the provider when the intake was created, i.e., the program’s termination date is after the intake’s received end date.

A TH intake and investigation still cannot be finalized and uploaded if an allegation is linked to a terminated TPT that was *not* active when the intake was created.